



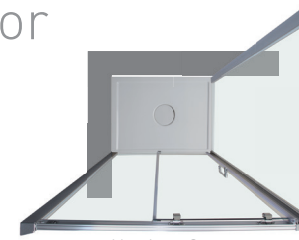
## PSC55 » Porta Scorrevole - Sliding Door

### Specifiche:

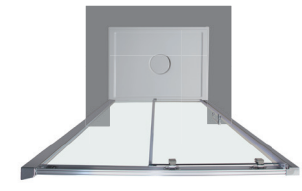
- Struttura cromo;
- Vetro temperato da 6 mm (solo trasparente);
- Disponibile nella versione DX / SX;
- Altezza 1900 mm.

### Specifications:

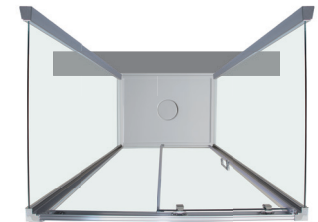
- Chrome structure;
- 6 mm tempered glass (transparent only);
- Available in Right and Left version;
- Height 1900 mm.



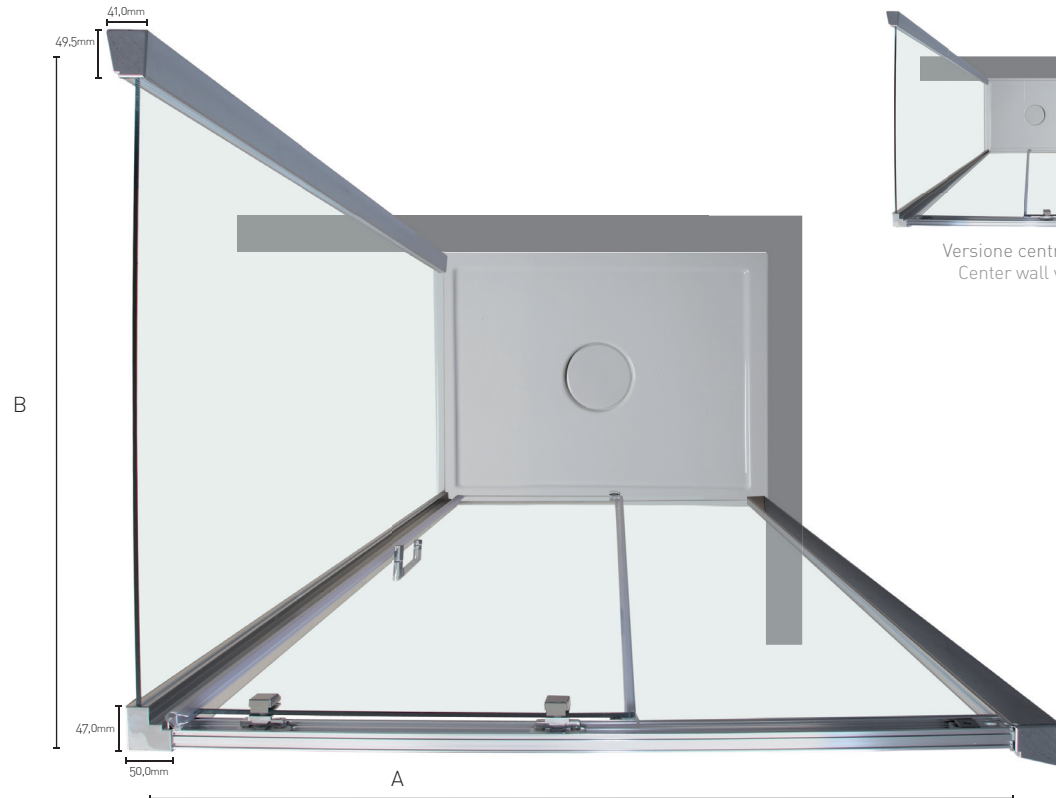
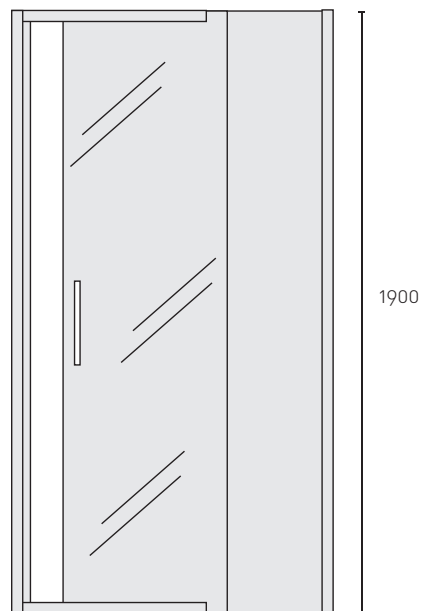
Versione Sx  
Left version



Versione nicchia  
Niche version



Versione centro parete  
Center wall version



APERTURA PORTA:  
DOOR OPENING:  
380 - 430 - 480 - 530 - 580

Versione angolare DX  
Corner right version

#### SPECIFICHE TECNICHE / TECHNICAL SPECIFICATIONS

##### Dimensioni Porta (A) (Nicchia) / Door Sizes (A)

L/W mm	H/H mm	Peso vetro kg	Apertura porta	Estensibilità mm
		Glass weight kgs	Door opening	Extension mm
1000	1900	32	380	965-1015
1100	1900	35	430	1065-1115
1200	1900	38	480	1165-1215
1300	1900	41	530	1265-1315
1400	1900	44	580	1365-1415

#### SPECIFICHE TECNICHE / TECHNICAL SPECIFICATIONS

##### Porta abbinata a Lato Fisso / Door matched with fixed panel

P/D mm	H/H mm	Estensibilità mm
		Extension mm
1000	1900	965-990
1100	1900	1065-1090
1200	1900	1165-1190
1300	1900	1265-1290
1400	1900	1365-1390

#### SPECIFICHE TECNICHE / TECHNICAL SPECIFICATIONS

##### Dimensioni Lato Fisso (B) ALF / Fixed Panel Size (B)

P/D mm	H/H mm	Peso vetro kg	Estensibilità mm
		Glass weight kgs	Extension mm
700	1900	25	665-690
800	1900	27	765-790